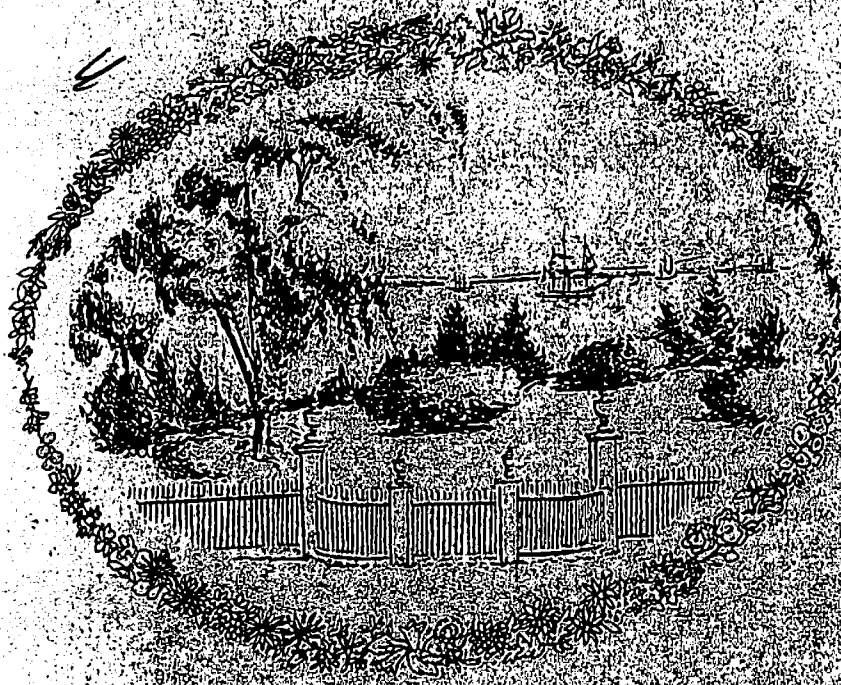


KING CAESAR HOUSE

FOR REFERENCE

Do Not Take From This Room



KING CAESAR
PORTS OF CALL

August 21 and 22, 1970

Duxbury Free Library

Dedication

EDITH GAY EITTINGER

(1874 - 1970)

To Edith Gay Eittinger, wife of Captain Charles Eittinger, resident of
Dixbury and Washington, D.C., a graduate of Radcliffe College, whom we
remember as a nationally recognized authority on many aspects of
gardening. She was a master gardener, frequently honored by the Garden
Club of America for her work with ferns and roses, the founder of
Fern Valley of the Washington area, and an early member of the
Dixbury Garden Club and the Community Garden Club of Dixbury.

The Community Garden Club of Duxbury
The Duxbury Garden Club
and
The Duxbury Rural and Historical Society
PRESENT

A SUMMER FLOWER SHOW
"KING CAESAR:
PORTS OF CALL"

At the King Caesar House (1808)
King Caesar Road
Duxbury, Massachusetts

Friday and Saturday, August 21 and 22, 1970
from 11 - 5

Admission \$2.50
Children 75¢

Tea will be served

To benefit the Community Garden Club of Duxbury
The Duxbury Garden Club
and
The Duxbury Rural and Historical Society

When addressing the Horticultural Society of Massachusetts in 1838,
Ezra Weston, "King Caesar II" said, "He who cultivates a garden
cultivates and advances at the same time his own nature."

Division I

Artistic Design

"Ports of Call: King Caesar around the world and close to home."
Section A. Federal America

The position of the stairs in the front hall has been changed several times since the building of the house. They are now as they were after the first change made by the Westons.
Class 1. The glories of the Federal Period shown by arrangements in the front hall of the mansion.
(5 entries)

Scale of Points

| | |
|----------------|-----------|
| Interpretation | 40 |
| Design | 30 |
| Distinction | 20 |
| Color | <u>10</u> |
| Total | 100 |

Section B. On Cape Cod. In the small library.

Class 1. Marine study combining flowers with driftwood, coral, shells, grasses or any suitable material suggesting the sea in a suitable container. (5 entries)

Scale of Points

| | |
|----------------|-----------|
| Interpretation | 40 |
| Design | 30 |
| Distinction | 20 |
| Condition | <u>10</u> |
| Total | 100 |

Section C. Spain.

Pizarro of Spain invading Peru in the year 1531 is the subject of the colorful wallpaper in the East Parlor.

Class 1. Arrangements in the Spanish manner in appropriate containers. (5 entries)

Class 2. Hanging Spanish arrangements at the windows. (3 entries)

Section D. France

The very rare and exquisite wallpaper in the West Parlor dates from the 19th century and was printed in Paris.

Class 1. Arrangements in the French manner in suitable containers. (8 entries)

Scale of Points

| | |
|--------------------------|-----------|
| Design | 30 |
| Interpretation | 30 |
| Suitability to placement | 30 |
| Distinction | <u>10</u> |
| Total | 100 |

Section E. Treasures from at home and abroad displayed in the dining room.

Class 1. Nineteenth century arrangements using suitable containers.

- A. Sandwich Glass. (5 entries)
- B. Haviland China. (5 entries)
- C. Blue Staffordshire. (5 entries)
- D. Using Victorian paperweights as an accessory (5 entries)

Scale of Points

| | |
|------------------------|-----------|
| Conformity to schedule | 40 |
| Design | 30 |
| Originality | 20 |
| Distinction | <u>10</u> |
| Total | 100 |

Section F. Our thirteen colonies.

In the summer kitchen and breakfast room.

Class 1. Trays arranged for breakfast in the Colonial manner. Juniors, grades 2, 3 and 4.

Class 2. An old-fashioned kitchen. Arrangements suitable for a colonial kitchen. Juniors, 2 groups: Grades 5-6 and Grades 7-8.

Scale of Points

| | |
|----------------|-----------|
| Interpretation | 40 |
| Originality | 30 |
| Design | 20 |
| Color | <u>10</u> |
| Total | 100 |

Class 3.

Early American arrangements in wood, iron, pewter, earthenware or straw (wicker) container depicting life in the Colonial kitchen in the 1700's.

Scale of Points

| | |
|---------------------------------|-----------|
| Conformity to schedule | 30 |
| Originality | 30 |
| Relation of design to container | 20 |
| Execution | <u>20</u> |
| Total | 100 |

Section G. Drifting on the China Sea.

In the studio.

Class 1.

Oriental line arrangements in suitable containers. In niches 24" wide, 30" high, 12" deep. (10 entries)

Scale of Points

| | |
|--------------------------|-----------|
| Conformity to schedule | 30 |
| Suitability to placement | 30 |
| Design | 30 |
| Distinction | <u>10</u> |
| Total | 100 |

Section H. The sum of our rich heritage. Our own creativity.

Class 1.

A composition of the exhibitor's choice using any accessories desired. In niches 24" wide, 30" high, 12" deep. (5 entries)

Scale of Points

| | |
|--------------------------|-----------|
| Originality | 40 |
| Design | 30 |
| Suitability to placement | 20 |
| Distinction | <u>10</u> |
| Total | 100 |

Division II

Conservation

Salt Marshes: Our Most Fertile Acres

1. Wall exhibit showing the food chain.
2. Material showing the importance of salt marshes and why their preservation is vital.

Division III

Horticulture

Jerusha Bradford Weston (Mrs. Ezra Weston II) was a lover of gardens. Legend says that the first tiny purple Iris Reticulata in this country appeared in her garden, brought by the first of her husband's ships to venture into the region of Asia Minor.

Section A. Junior Horticulture.

In the studio.

- | | |
|---|------------|
| Class 1. Flower Specimen | Grades 2-4 |
| Class 2. Flower Specimen | Grades 5-8 |
| Class 3. Vegetable Specimen | Grades 2-4 |
| Class 4. Vegetable Specimen | Grades 5-8 |
| Class 5. Summer in Duxbury. Dish Gardens using beach, woods or field materials. | Grades 2-4 |
| Class 6. Summer in Duxbury. Dish Gardens using beach, woods or field materials | Grades 5-8 |

Scale of Points for Dish Gardens

| | |
|---------------------------|-----|
| Interpretation | 40 |
| Originality | 30 |
| Relationship of materials | 10 |
| Design | 10 |
| Condition | 10 |
| Total | 100 |

Section B. Hanging Baskets.

Flowering plant grown in a hanging container -- pot not to exceed 8 inches in diameter.

Section C. Annuals.

One stalk with bloom and foliage 12" or more.

- Class 1. Tagetes (Marigolds)
- Class 2. Antirrhinum (Snapdragons)
- Class 3. Zinnias (Zinnias)
- Class 4. Salpiglossis Sinuata
- Class 5. Petunia (Petunias) one bloom, stem 4 to 8 inches.
 - a. single
 - b. ruffled
 - c. double

Section D. Rosa (Roses)

- Class 1. Hybrid Tea -- one specimen bloom, stem 10 to 12 inches.

Class 2. Floribundas --one stem or spray, 8 to 10 inches.

Section E. Pots or Tubs.

Plant material growing a container not less than 8 inches in diameter, suitable for outdoor display.

Section F. Dahlias.

- Class 1. Miniature
- Class 2. Pompom.
- Class 3. Single
- Class 4. Informal decorative.
- Class 5. Formal decorative.

Section G. Herbs.

Three stalks 6 inches or more, not dried.

Section H. Vegetables.

To be displayed in a basket of the exhibitor's choice.
For men only. Invitation class.

- Class 1. Tomatoes.
- Class 2. Squash.
- Class 3. Corn -- -- To be exhibited with husks. Cut 1 inch square window to show kernals.
- Class 4. Beets. Tops trimmed to 1 inch.
- Class 5. Carrots. Tops trimmed to 1 inch.
- Class 6. Peppers.
- Class 7. Eggplant.
- Class 8. Beans -- Waxed and Green.

Scale of Points.

| | |
|----------------------------|----------|
| Condition | 25 |
| Stem and foliage | 25 |
| Color | 25 |
| Size(according to variety) | 20 |
| Correct labeling | <u>5</u> |
| Total | 100 |

Rules

For all competitive divisions.

1.
All entries must be in place and ready for judging by 12:30 p.m. on Thursday, August 20, and may not be removed before 5:15 p.m. on Saturday, August 22.
 2.
Each entry must have been checked by the Classification Committee and have an entry card before being placed.
 3.
All properties must be marked with the name of the exhibitor. The committee will make every effort to protect property of exhibitors; however, it regrets that it can not be responsible for loss or damage.
 4.
The use of plant material on the state Conservation list will not be permitted in any division unless it is accompanied by a card from the New England Wild Flower Preservation Society, Inc. These cards will be provided by the committee.
- Note: The following plants protected by law in Massachusetts may not be exhibited, except for education purposes on their own roots, in any show, regardless where grown:
- a. Arbutus -- Epigaea repens
 - b. All wild Azaleas
 - c. All wild Orchids
 - d. Cardinal Flower -- Lobelia cardinalis
5.
Late entries in competitive classes will be received, but marked "Not in Competition."
 6.
Exhibitors are allowed only one entry in each class (or subdivision of a class) in all competitive classes.
 7.
Exhibitors are expected to keep their exhibits in good condition. They may be checked between 9 and 11 a.m. each day. The Committee will offer all possible assistance.

Flower Show Committee

Mrs. William H. Houghton, President, Community Garden Club
of Duxbury
Mrs. G. Lincoln Dow, President, Duxbury Garden Club
Mr. Robert Ross, President, Duxbury Rural and Historical Society
Mr. and Mrs. Herbert C. Collins, Curators of King Caesar House

General Chairman, Mrs. Earle S. Tyler, Jr.
Co-chairman, Mrs. Paul W. Bittinger
Co-chairman, Mrs. Charles H. Wood
Schedule, Mrs. Gordon Berg, Mrs. Warren B. Stetson
Staging, Mrs. James R. Bundy
Properties, Mrs. Alexander C. Colburn
Horticulture Entries, Mrs. Warren B. Stetson
Horticulture Classification, Mrs. Laura E. Benedict
Horticulture Placement, Mrs. Joseph W. Lund
Artistic Entries, Mrs. Robert Whitcomb
Artistic Classification, Mrs. Sherman L. Whipple, Jr.
Artistic Placement, Mrs. Benjamin F. Goodrich, Jr.
Juniors, Mrs. David B. Kelley
Judges, Mrs. Charles W. Lovejoy, Jr.
Clerks, Mrs. Lewis H. Mills
Publicity, Mrs. Lester F. Haines
Conservation, Mrs. David Blair McClosky
Hospitality, Mrs. Albert H. Crafts
Hostesses, Rural and Historical Society, Mrs. Fred E. Whiskin
Hostesses, Duxbury Garden Club, Mrs. Franklin K. Hoyt
Dismantling, Mrs. A. Nathaniel Pierce
Treasurer, Mrs. N. Rust Cutler, Jr.
Tickets, Mrs. Catherine S. Merry
Program, Mrs. John H. Cutler
Artwork, Mr. Arthur Cady
Advertising, Mrs. Richard H. Cotton
Commercial Exhibits, Mrs. Robert S. Fox